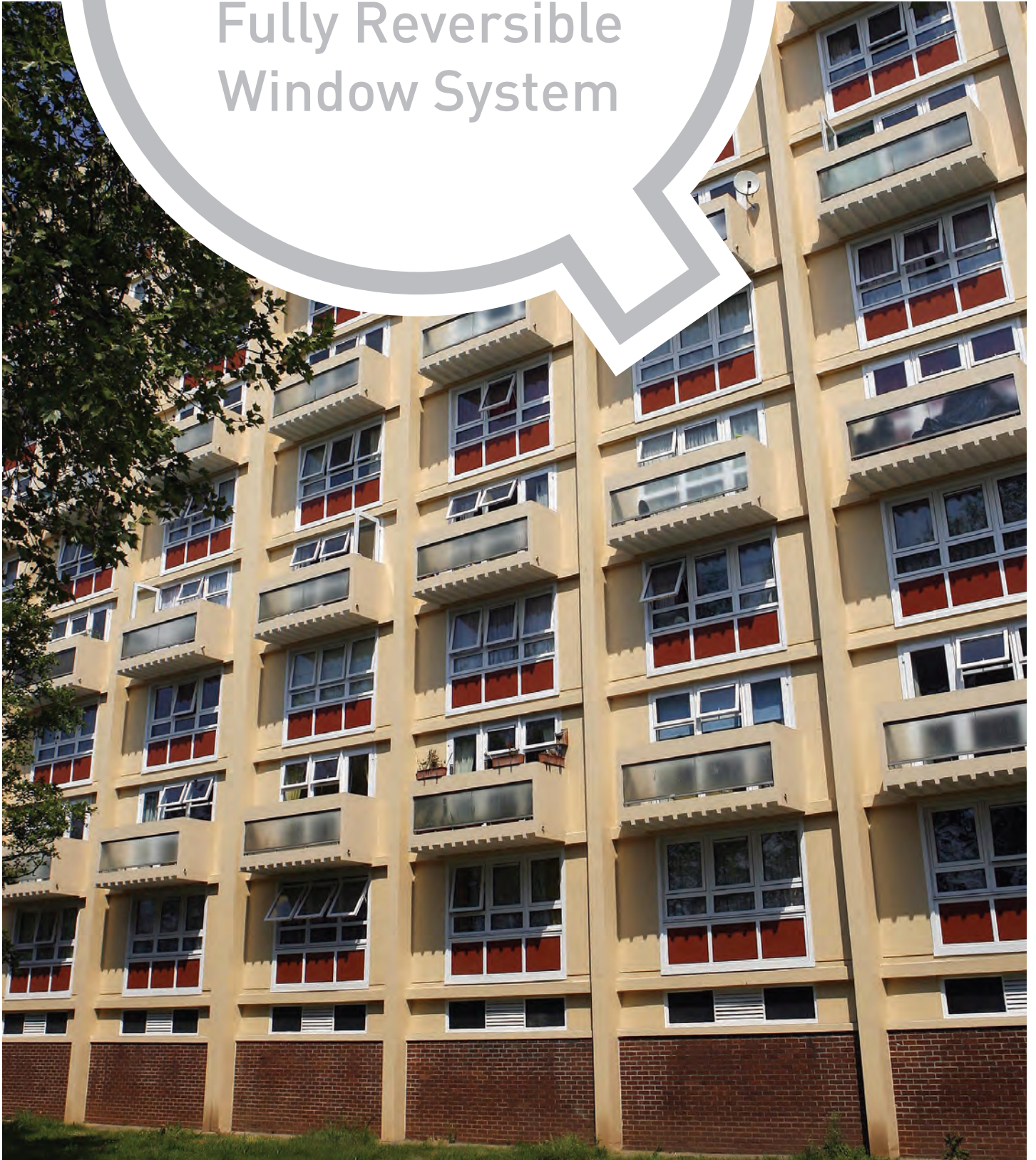


Fully Reversible Window System



THE BEST WINDOWS ARE MADE FROM PROFILE 22

Fully Reversible Windows

Especially designed for medium-high rise applications and inaccessible locations, our new Fully Reversible Window has been manufactured using low carbon technology and pioneers our 'thermal barrier' technology the secret ingredient to achieving greater thermal performance.

Commitment to excellence in window technology

We are proud to launch our new 70mm Fully Reversible Window, which has been delivered through continued product innovation and our commitment to excellence in window technology. As with all our products, we researched everything that the end-users wanted from a fully reversible window and designed it exactly to this specification, incorporating low carbon technology and maximising thermal performance.

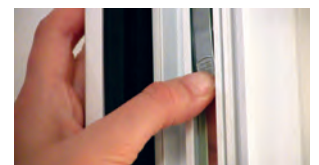
To give this high-tech system its own unique appearance, we have designed it with a deep-beveled edge to the window profile giving it a striking, but modern look.



1) The window can rest in the narrow night ventilation position or with approximately 100mm opening



2) The window can also rest in a more open position approximately 300mm opening



3) Once the safety catch is released the window can be completely rotated



4) The window rotates without entering the room space



5) The special hinge assembly brings the outside of the window to the inside of the room



6) The fully reversed window engages on a safety catch and allows safe and easy cleaning of the outside pane

Thermal performance



High-rise applications

The Fully Reversible Window is mostly specified for use in medium-high rise applications and inaccessible locations. The window easily rotates 180° allowing for safe and easy cleaning of the outside pane without the window entering the room space itself; avoiding snagging of curtains or blinds. Its high security locking and child resistant safety catches, and weather performance ensures its maximum safety and security.



Thermal performance

Also through our commitment to continuous improvement we have developed the highly innovative 'Aeroframe', which has been integrated into this new window system allowing for greater thermal performance through its complex 'thermal barrier' technology.

This Fully Reversible Window is a 5 chamber system and achieves a WER 'A+' rating when glazed with argon filled triple glazing. The system eliminates the need for expensive Krypton gas filled units, insulation in the profiles or expensive special reinforcing; therefore reducing cost.



We have designed this new Fully Reversible Window system to satisfy the needs of the users in its intended application, whilst delivering excellent thermal values and attractive design, and in accordance with our corporate goal to deliver outstanding products through sustainable sourcing always.

About Profile 22

Profile 22 is the UK's leading PVC-U window and door systems company boasting more than 30 years' experience. We are proud to say we possess the UK's most widely specified PVC-U window and door system.

All of our products are backed-up by unrivalled technical support, knowledge of contracts, government initiatives and industry expertise.

The best windows
are made from
Profile 22



Why Profile 22?

- Working with windows since 1976
- Committed to protecting the environment and reducing carbon emissions through recycling, manufacturing low carbon products and company initiatives
- Dedicated specification support team
- Nationwide network of Approved Window Contractors manufacturers of high quality PVC-U windows and doors
- 54,000 frames manufactured using Profile 22 every week
- Part of the Epwin Group

Fully accredited system

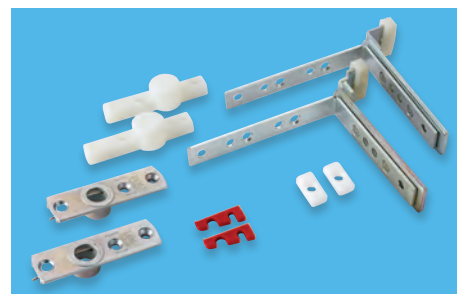
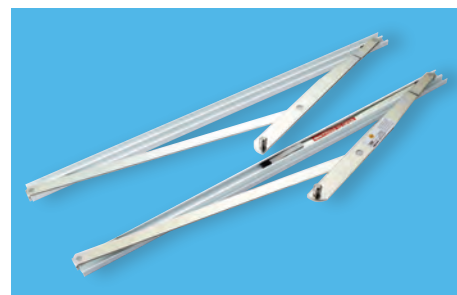
The window is Secured by Design accredited giving peace of mind to the end-user that the product meets police approval for security and ensures the windows are tested and approved to BS7950 security standard.

Certified manufactured to BES6001 proving our products have been made with constituent materials that have been responsibly sourced and allows additional points under the Code for Sustainable Homes or BREEAM.



Hardware

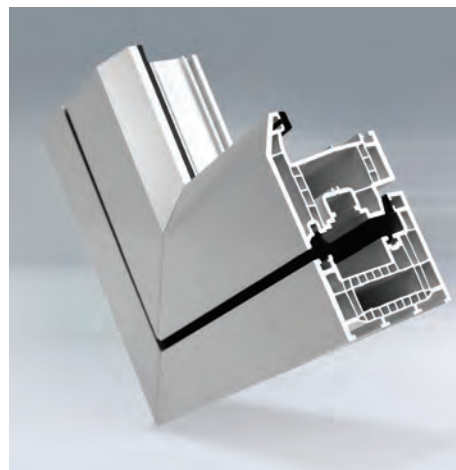
We offer security locking systems and other associated fully reversible window hardware to make product specification simple, so you only have to deal with one company.



Product features at a glance

- Fully rotates allowing safe & easy cleaning from inside the building
- 5 chamber system incorporating 'Aeroframe' thermal barrier technology
- Deep-bevel for a striking appearance
- Recycled composite outer frame reinforcement
- Triple glazing allows U-values to 0.8 W/(M².K)
- Cost-effective WER 'A+' option*
- Glazing options: 24, 28, 40 & 44mm
- Standard co-extruded gasket - optional 2nd & 3rd weather seal to aid thermal performance
- Variety of colours available
- Full suite of hardware & accessories
- Designed & manufactured in Great Britain

* with argon filled sealed units



For more information
please contact us:

Profile 22 Systems
Stafford Park 6, Telford
Shropshire, TF3 3AT
T: 01952 290910
F: 01952 290460
W: www.profile22.co.uk
E: specifier@profile22.co.uk



BS EN ISO 9001
FM09180



BS EN ISO 14001
EMS86980



BS OHSAS 18001
OHS523157



www.greenbooklive.com
Licence No. BES 583816



Official Police Security Initiative



BS EN 12608
KM12895
PROFILE



BS EN 12608/PAS24
KM33523
ENHANCED SECURITY
WINDOW SYSTEMS
SUPPLIER



BS EN 12608/PAS24
KM56791
ENHANCED SECURITY
DOOR SYSTEMS
SUPPLIER



BS 8529/PAS24
KM594776
ENHANCED SECURITY
DOOR SYSTEMS
SUPPLIER



PROFILE 22 is an international PVC-U profile system supplied to local independent manufacturers and installers who contract to install windows, doors and conservatories.

PROFILE 22 SYSTEMS cannot be held accountable for manufacture or installation by independent companies. All information in this publication is provided for guidance only and is given in good faith. As it is company policy to continually improve products, methods and materials, changes of specification may be made from time to time without prior notice. This statement does not affect your statutory rights. © PROFILE 22. Part of the Epwin Group

